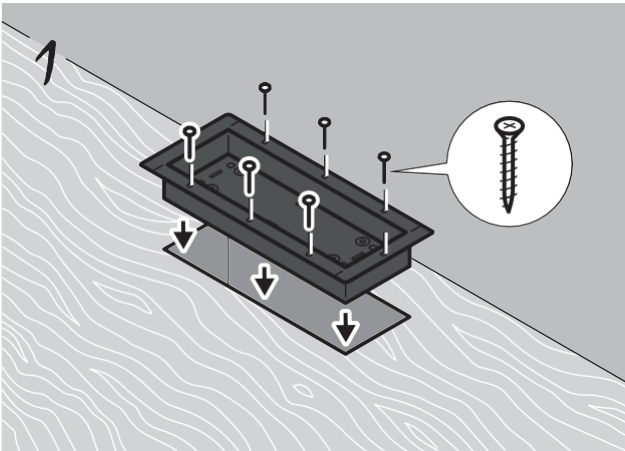


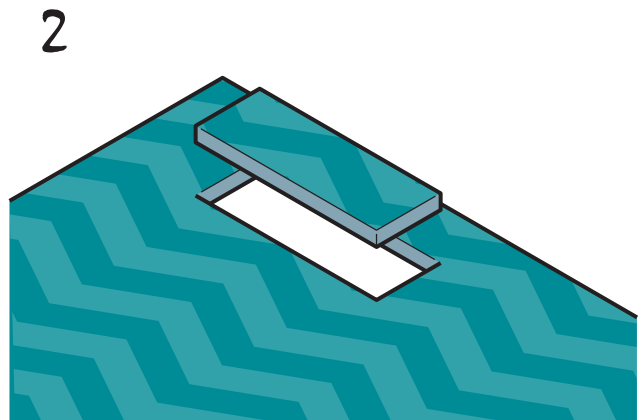
Pro

INSTALLATION MANUAL

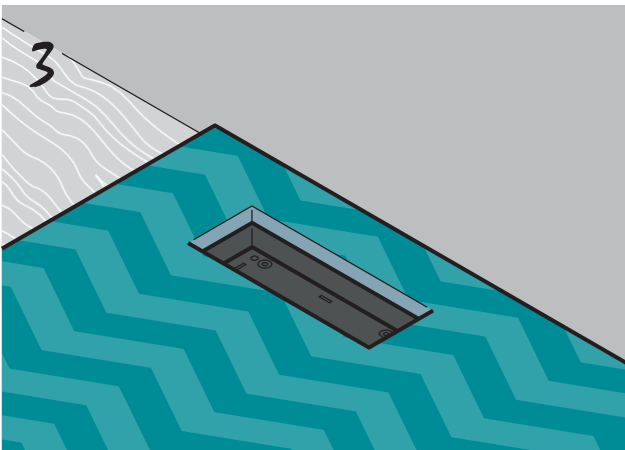
 SCHIBERG



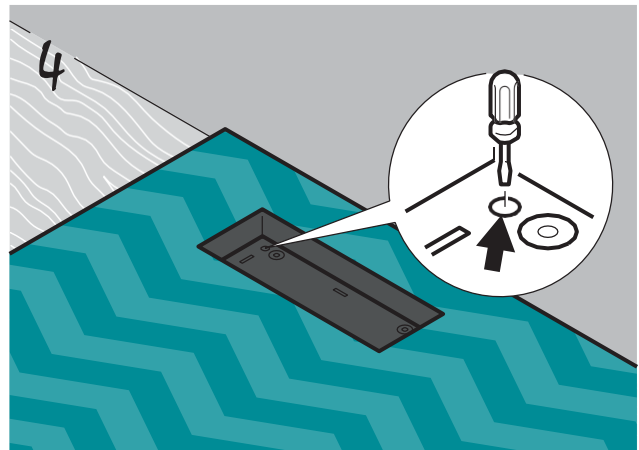
Install the grille casing inside an opening in the rough wall. Fix the casing with screws.



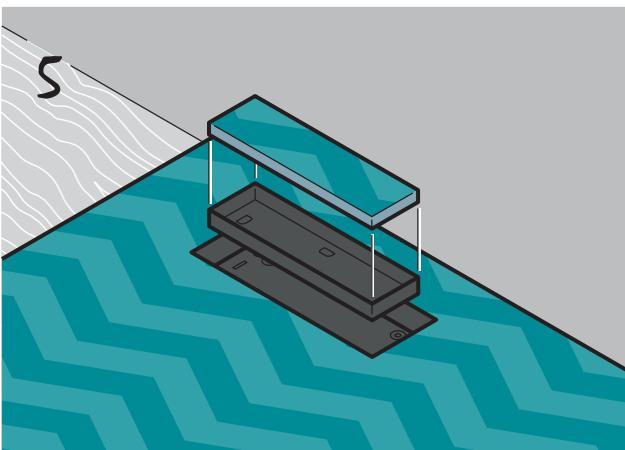
Accurately carve a hole in the surface finish to match the size of the adjusting frame. Keep the cut-out section of the finish.



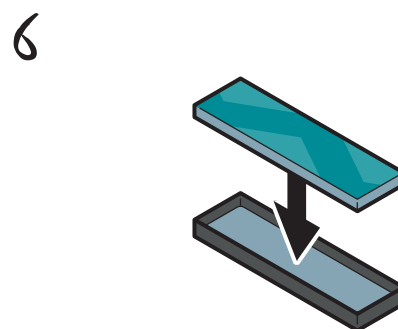
Place the ready-made finish on top of the frame body so that it fits over the adjusting frame.



Use the adjustment screws to adjust the frame level with the top edge of the finish.



Carve the decorative element to insert into the tray in accordance with the geometry and shape of the finish.



Spread adhesive on the tray and glue the prepared finish element. You're done!